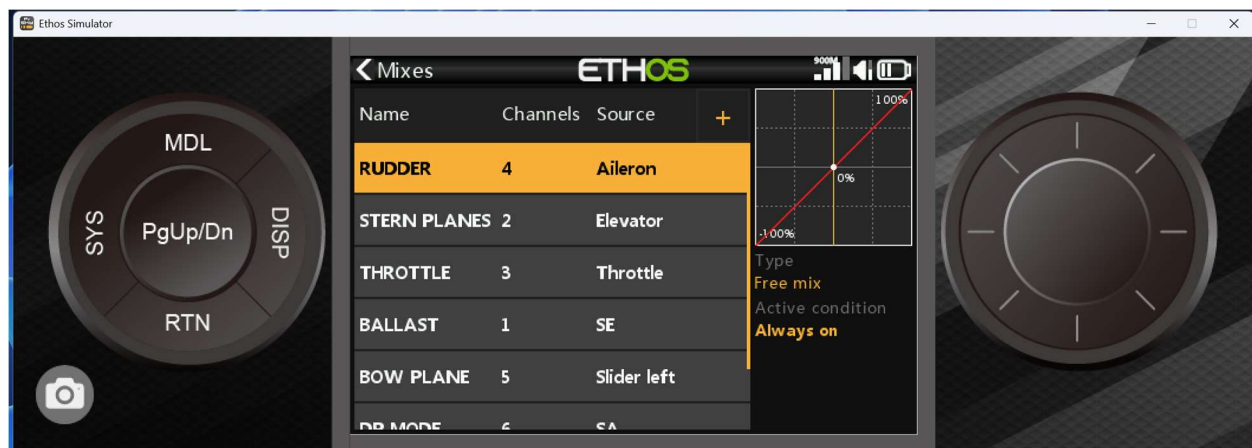
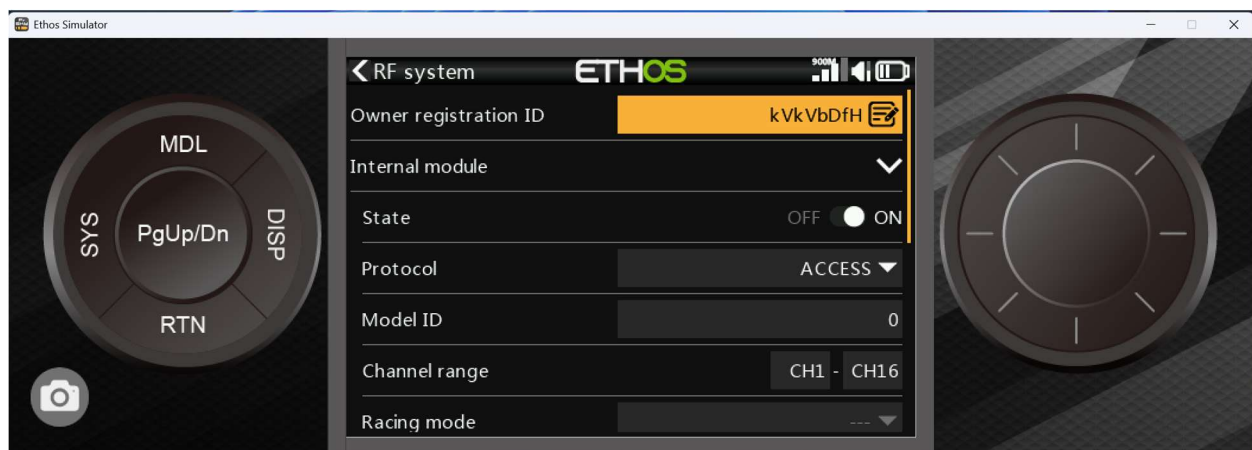


# FrSky Settings for X Tailed Neptune

## Channel Assignment and Source



This is the MIXES setup on the FrSky TX.



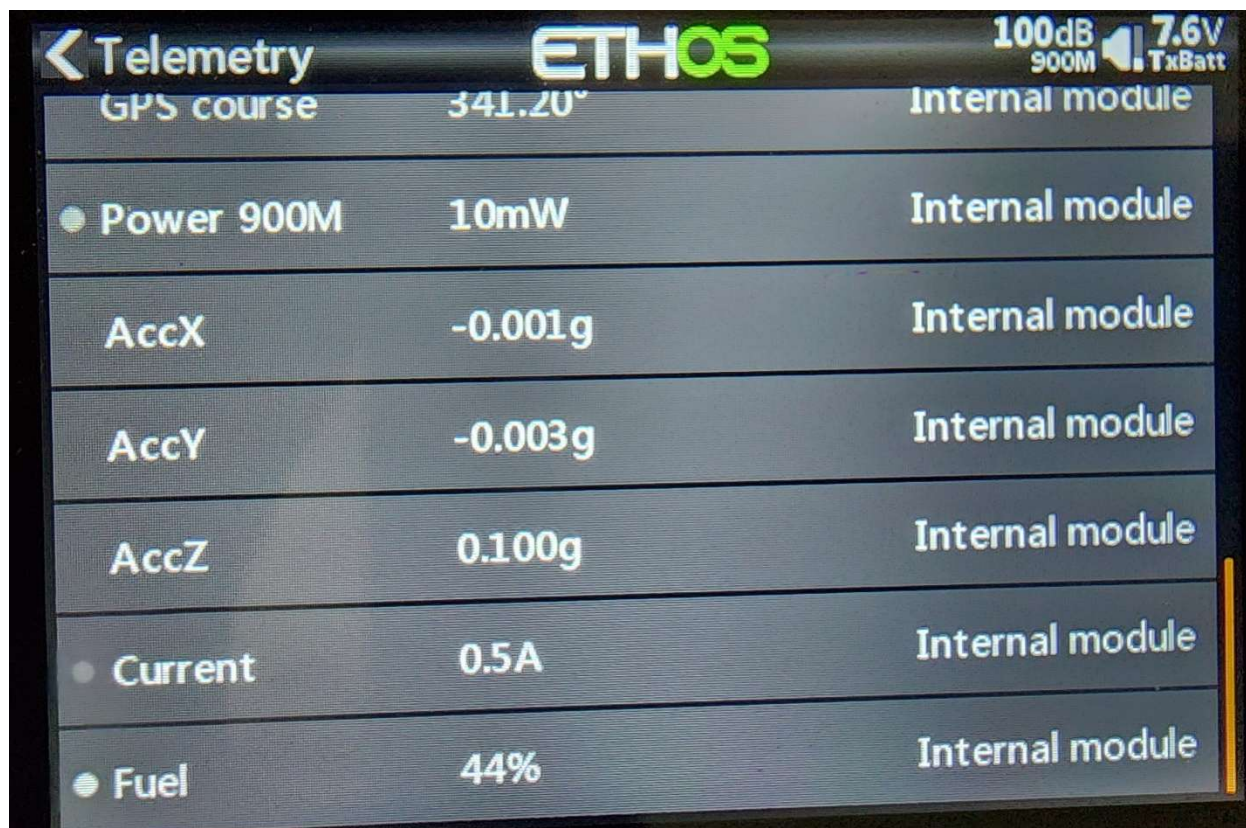
# FrSky Settings for X Tailed Neptune



Here are the RF Settings

Telemetry			ETHOS	100dB 900M	7.6V TxBatt
VFAS	11.92V	Internal module			
Altitude	0.00m	Internal module			
VFR	100%	Internal module			
VSpeed	-0.02m/s	Internal module			
GPS course	344.40°	Internal module			
● Power 900M	10mW	Internal module			
● AccX	-0.001g	Internal module			

## FrSky Settings for X Tailed Neptune



The image shows a digital display for an ETHOS system. At the top, the word 'ETHOS' is displayed in large green letters. To the left of 'ETHOS' is a back arrow and the word 'Telemetry'. To the right of 'ETHOS' are two status indicators: '100dB 900M' with a speaker icon and '7.6V Tx Batt' with a battery icon. Below the header, there is a table of telemetry data. The table has three columns: a parameter name, a numerical value, and a module location. The parameters listed are GPS course, Power 900M, AccX, AccY, AccZ, Current, and Fuel. Each parameter has a small circular icon to its left. The module location for all items is 'Internal module'.

← Telemetry	ETHOS	100dB 900M	7.6V Tx Batt
GPS course	341.20°	Internal module	
● Power 900M	10mW	Internal module	
AccX	-0.001g	Internal module	
AccY	-0.003g	Internal module	
AccZ	0.100g	Internal module	
● Current	0.5A	Internal module	
● Fuel	44%	Internal module	

Telemetry Output.